

Task Manager

for
Nokia 9210/9290 Communicator

PSI NT (PSILoc)
<http://www.psiloc.com/>

Installation Guide

Installation

Before installing this version of **Task Manager** application you have to uninstall any previous versions installed in your machine (if any). In order to uninstall previous version go to **Control Panel** and run **Install/Remove** application, then select **Task Manager** from the list of installed applications and press **Remove** button.

Now you can install the newest version. **Task Manager** is delivered in form of standard SIS installation file. You have to perform the installation process of this file according to your Nokia Communicator User Manual:

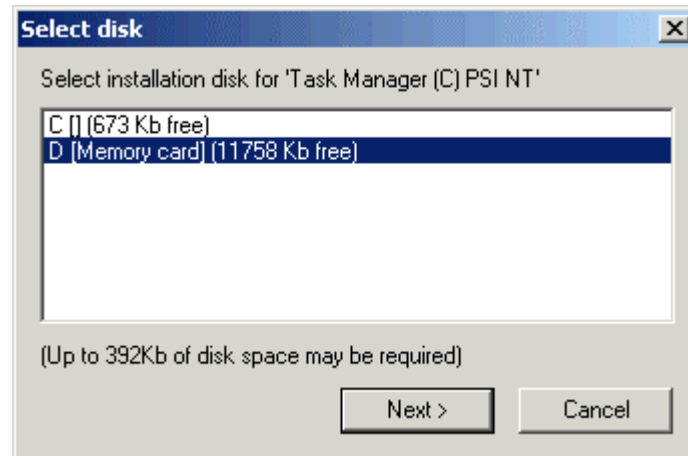
1. Check whether **PC Suite** application is running on your PC. If not – start it.
2. Connect your Nokia Communicator to PC using standard **data cable** (DLR-2L) and wait for PC Suite to establish connection with Communicator



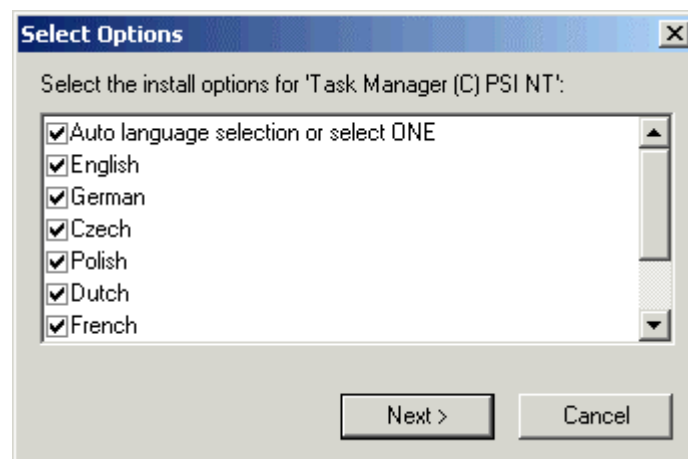
3. Double-click on **TaskMan.SIS** file using left mouse button – this will launch PC Suite's Installer.



4. Select **destination disk** for the installation. Choose **C:** drive (internal memory) if you work with multiple memory cards to assure Task Manager's functionality even when the card is removed/changed or **D:** drive (memory card) if you work with single MMC card to conserve internal memory.



5. Select **language** of Task Manager's user interface.



Installation is complete. Now you can open Task Managers main dialog and **register** it by entering **registration code**. If you don't have registration code, Task Manager will be started in time-limited trial version.